

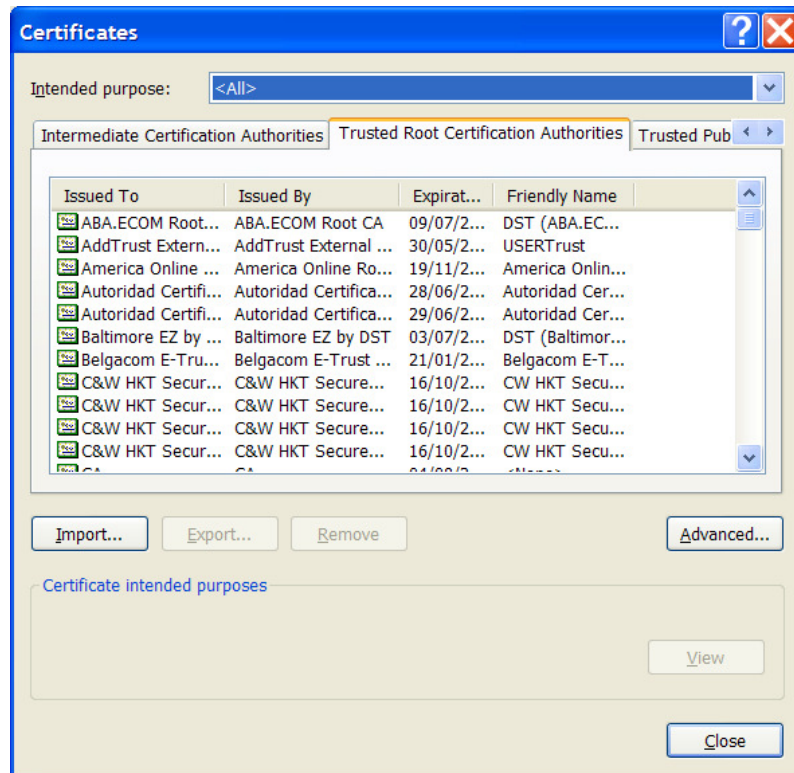
## ENSAT Security Certificate Procedures

In this document are the procedures for installing the necessary certificate to access the ENSAT registry over a secure link on Internet Explorer, Mozilla Firefox, Google Chrome and Safari. If you use another browser, please contact me directly at [astell@unimelb.edu.au](mailto:astell@unimelb.edu.au).

### Certificate Installation – Internet Explorer

Sent to you along with this document is a file called ensat\_certfile.cer. This is the digital certificate that is required to be uploaded to your browser. To do this in IE, please follow the instructions below.

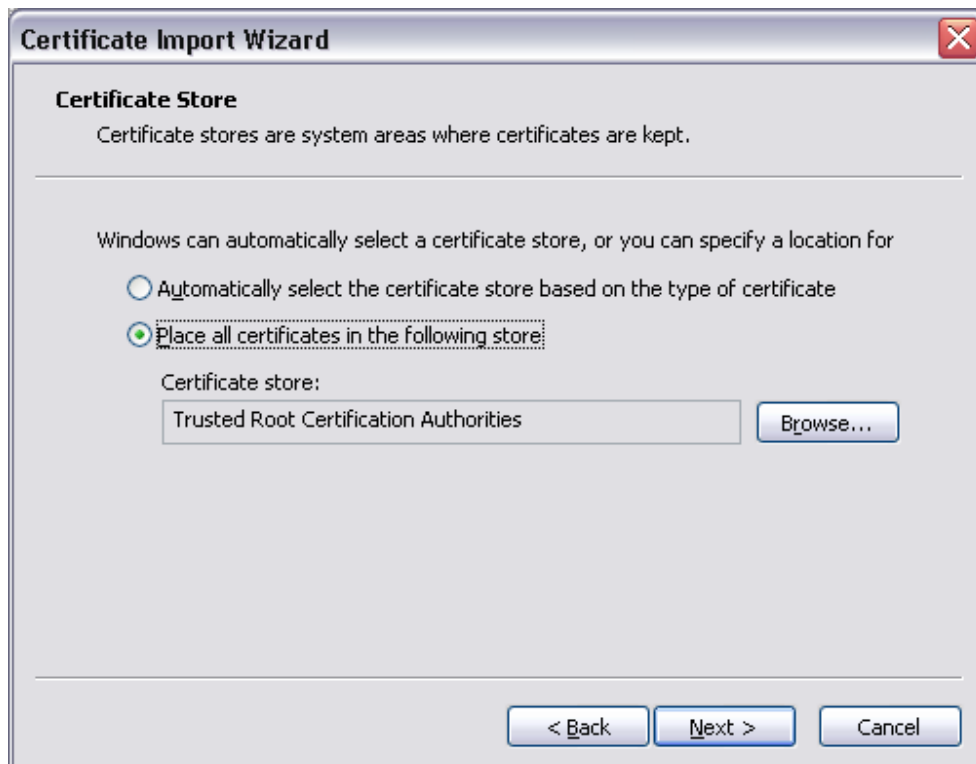
Open Internet Explorer. Select “Tools”, then “Internet Options”. Click on the “Content” tab, then click on the button marked “Certificates”. This will open the box that shows what certificates are already installed in your browser:



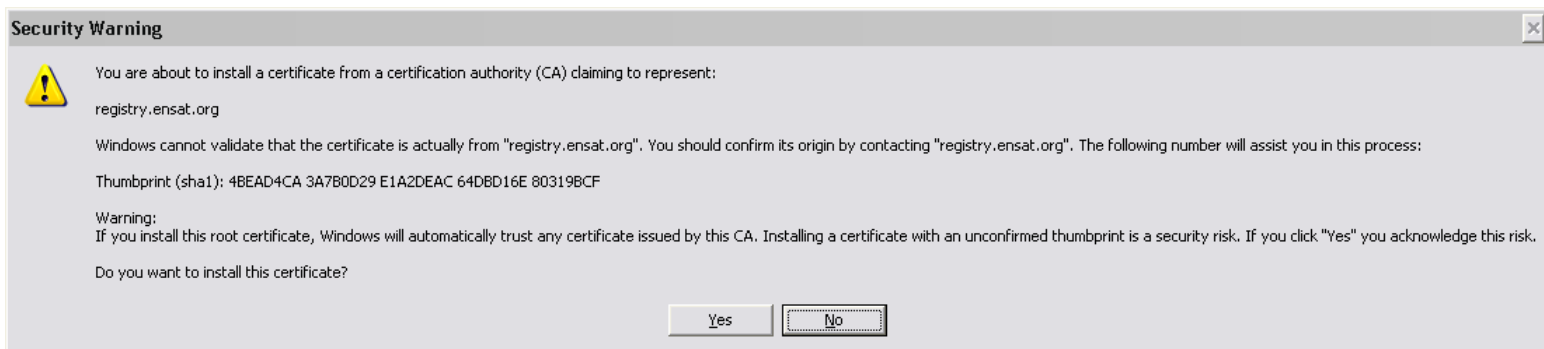
Click on the button marked “Import...” and this will start the Certificate Import Wizard. Follow the instructions through this wizard. When prompted for a certificate file, navigate to the file sent with this document:



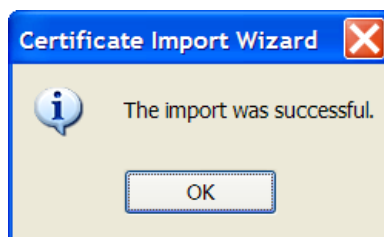
Click "Next". On the next screen, choose the option marked "Place all certificates in the following store" and select "Trusted Root Certification Authorities":



Click "Next" and "Finish". The following warning dialog box will appear:



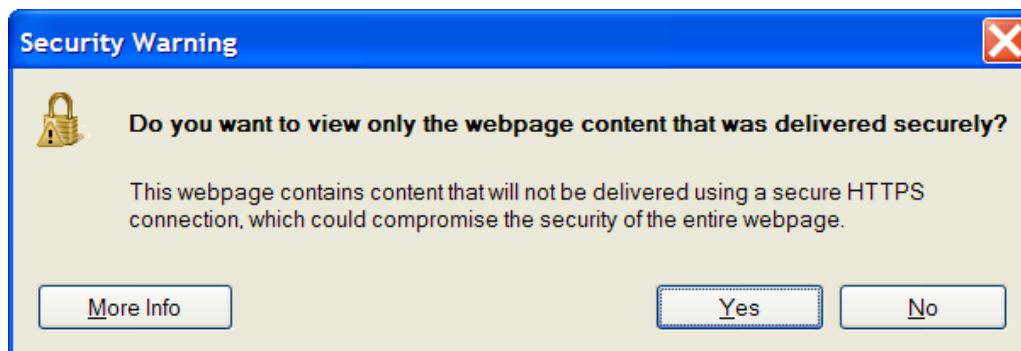
Click "Yes". If everything runs correctly, the certificate will be installed with the following confirmation box:



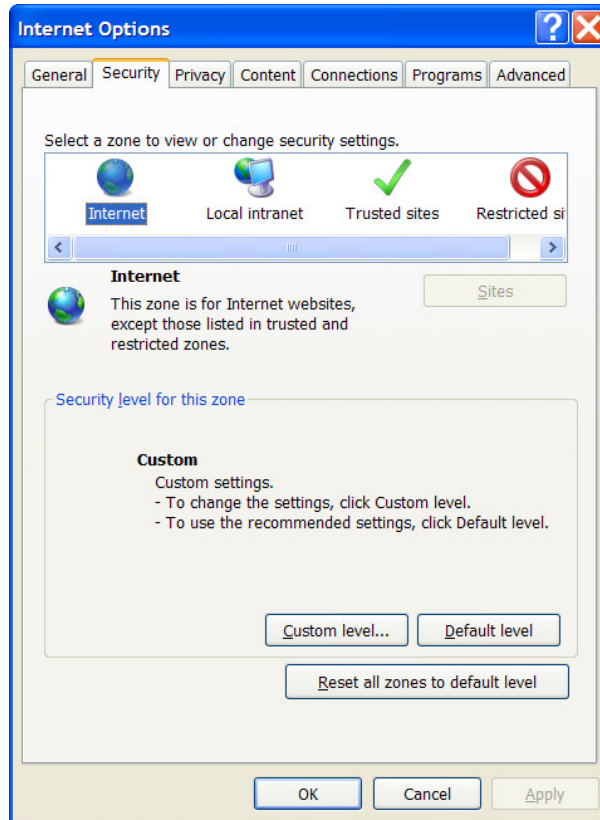
Now when you navigate to the ENSAT registry at <https://registry.ensat.org>, you should reach it directly without getting a warning from your browser.

### "Mixed Content" Message – Internet Explorer

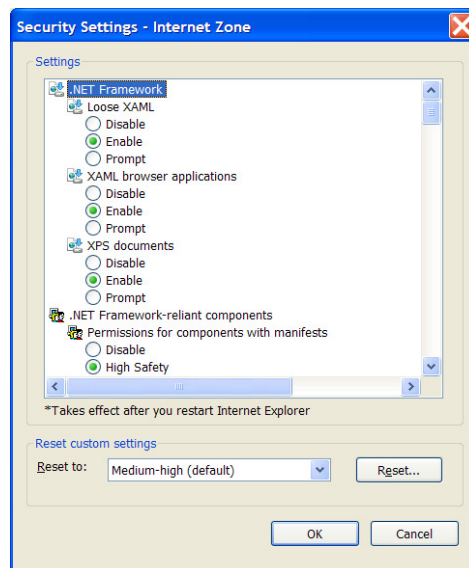
Images on the ENSAT registry (the ENSAT and ESF logos) are served from an unencrypted channel, but as part of an encrypted website. This does not pose any kind of security issue but IE treats this as "mixed content" and browsers are set to a default of prompting you on each page-load:



To switch this off, open Internet Explorer, go to "Tools", select "Internet Options", then go to the tab marked "Security":



For the “Internet” zone, click on the button marked “Custom level...” and a box showing all the properties that you can change will appear:

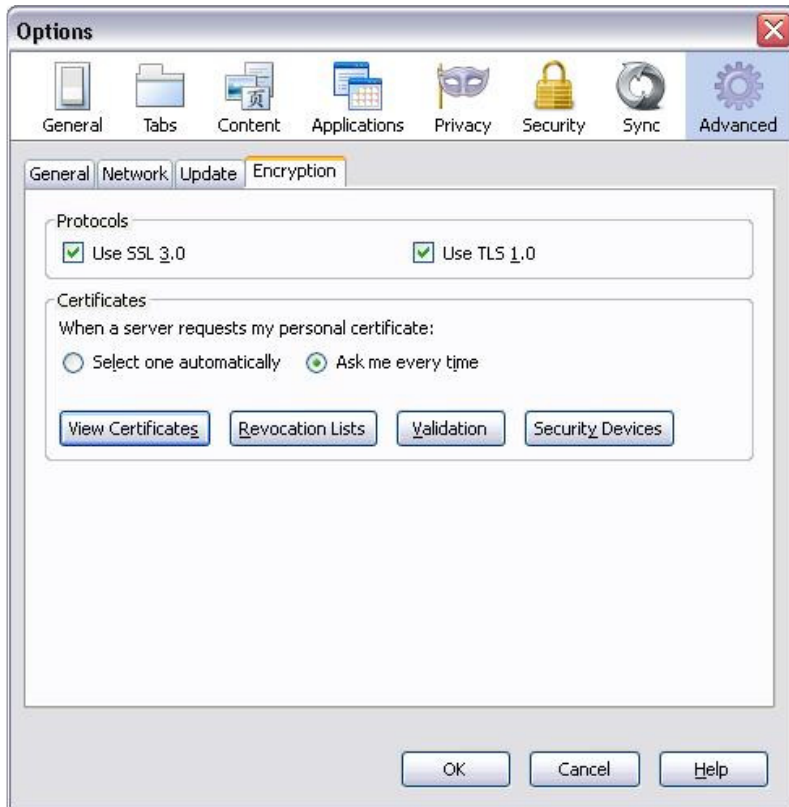


Scroll down until you find one marked “Display mixed content”. Change this from “Prompt” to “Enable”. Now click on “OK”, click “Yes” on the “Are you sure?” message, then click “OK” to close the Internet Options box.

You should no longer get these messages when loading the ENSAT registry web-pages.

## Certificate installation – Mozilla Firefox

To install the security certificate in the Firefox browser, select “Tools” → “Options” and go to the “Advanced” tab.

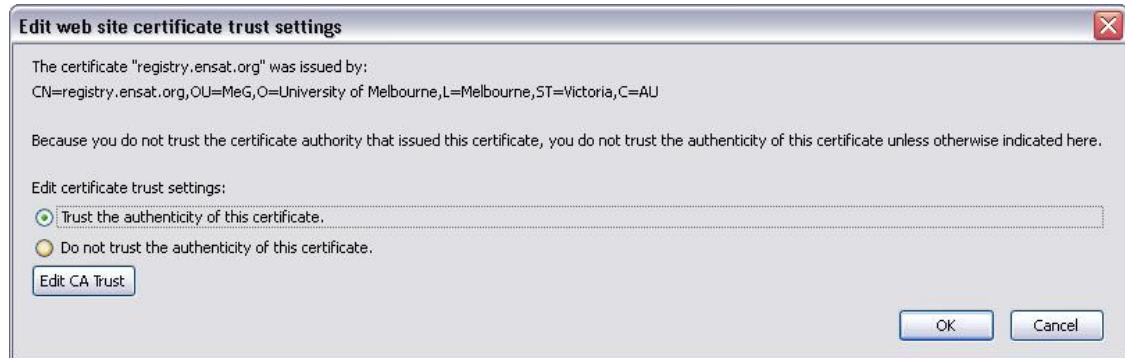


Select “View Certificates” and go to the “Servers” tab



Click on “Import...” and navigate to the file *ensat\_certfile.cer* (provided with account details). Now scroll down the list of available certificates and select the one marked “registry.ensat.org”.

Click on “Edit trust...” and select “Trust the authenticity of this certificate on the next dialog box.”



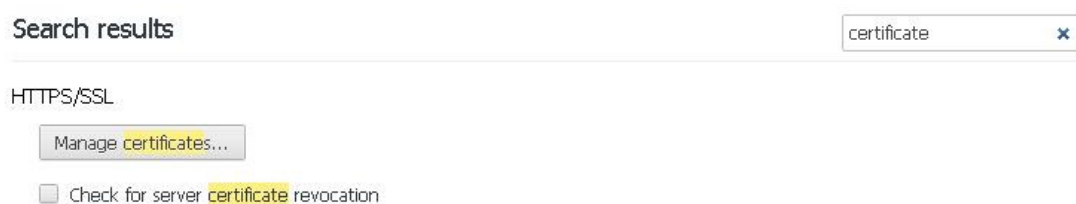
Click “OK” on all the remaining dialog boxes. The certificate will now be installed in the browser.

### Certificate installation - Google Chrome

For Google Chrome, select the menu option in the top-right of the browser (circled in red in the picture below), and select “Settings” from the menu that appears.



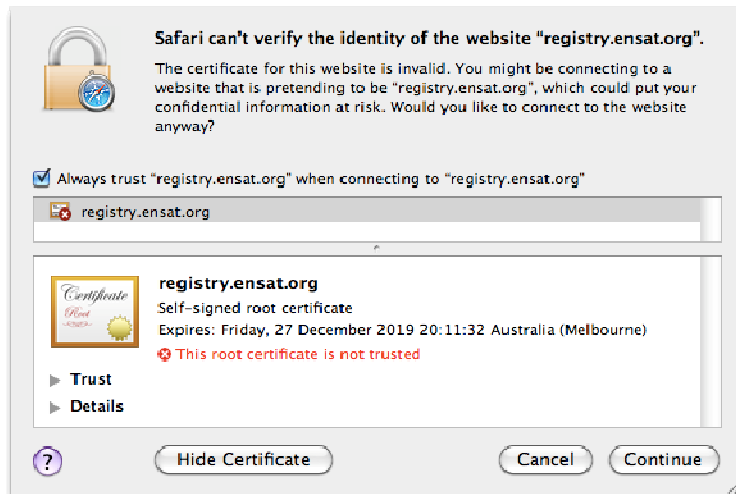
In settings, type “certificates” into the search option and press return. The section entitled “HTTPS/SSL” with the button “Manage certificates...” will be highlighted. Click on this button.



The certificate box shown in the first screenshot of the Internet Explorer section will then be shown. Follow the instructions as for Internet Explorer from here on, and the certificate will be installed.

## Certificate installation - Safari

Navigate to the secure ENSAT registry website. The browser will present a message warning that the connection is unsecured, and give the option to download the certificate into the browser, thereby setting up the trusted connection: *"Always trust "registry.ensat.org" when connecting to "registry.ensat.org"*. Select this box as shown in the screenshot below, and click "Continue". The certificate will be installed.



Anthony Stell, University of Melbourne, 12<sup>th</sup> January 2014